

# DIFFERENT TYPES OF K2 CENTRIFUGE ACCESSORIES

## A WIDE AND FLEXIBLE SELECTION

### ADAPT FOR YOUR NEEDS

Our concept of the K2 Centrifuge is based on a series of baskets and fixtures controlled by a single drive unit. During the years we have developed different baskets with the aim of suiting all different types of goods and plants. The drive unit is also developed in different variants to cover the needs of our customers.

You can add the K2 system to an already existing process if you want to expand or we can manufacture a fully automated plant with the K2 included from the start. The range and possibilities are wide and flexible.

### DRIVE UNIT K2 CENTRIFUGE

We have over 55 years of galvanizing experience and for the last 30 of them we have developed drive units. This has led to both "fixed" baskets for manual hot-dip galvanizing and "Basket locking" suited for integration in automated lines.

The K2 centrifuge is suspended from two points so that the torque reaction forces are force self-contained. Suspension means that there is no vibration as with a stationary centrifuge with fixed axis of rotation. The centrifuge basket is self-centered with its axis of rotation at the centre of gravity of the basket. Spinning takes place above the zinc surface and starts immediately after the basket has left the zinc. As there is no basket cooling time prior to spinning, excellent spinning quality is achieved even at normal galvanizing temperatures (460°C or 860°F).

The entire centrifuge is electric. We choose to use an electric motor instead of an air motor, which makes it easier to integrate the centrifuge in an existing plant. You can easily take electricity from the crane system and control it with a remote control at different speeds, which makes it easy to operate the centrifuge inside a enclosure.

### FIXED BASKET

The Fixed baskets are top-loaded and emptied through the bottom by lifting the outer casing and the components will fall out. Baskets are available in standard size with diameter 700 and height 650 mm.

### FIXED FIXTURE

With our fixed fixture, the centrifuge can be equipped with longer type of fixtures designed for special components such as threaded bars etc. The fixture handle up to 1,2m, if longer we had developed an horizontal centrifuge called H1.

### BASKET LOCKING

Our basket locking is more advanced and more suitable in our automatic lines e.g. our robot line. It is available in a basket for smaller parts or a fixture for longer components.

### PIVOT BASKET

An open basket that can be emptied 180 degrees without being disconnected from the centrifuge. Its open design makes the basket perfect for handling both smaller and larger products and it is easily integrated to existing processes.

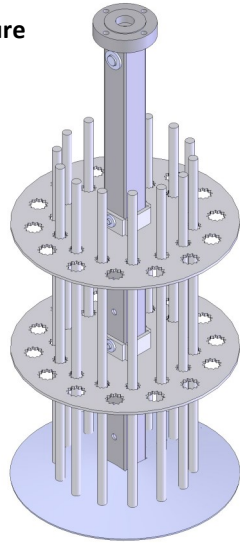


Herrebro Gård 6  
605 97 Norrköping  
Sweden  
Tel: +46 11 172600  
Web: [www.progatec.se](http://www.progatec.se)  
E-mail: [info@progatec.se](mailto:info@progatec.se)



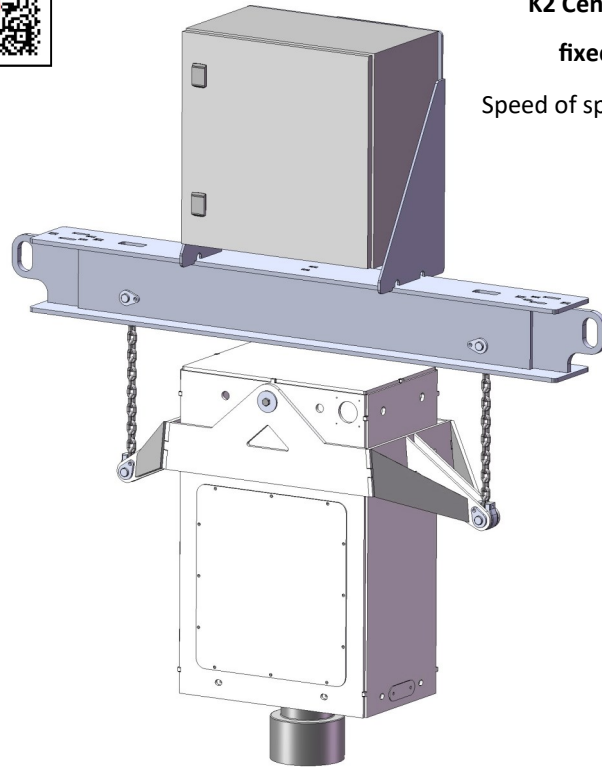
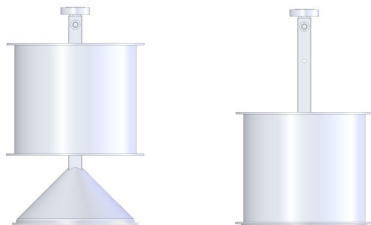
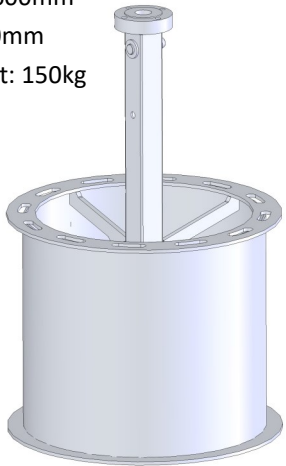
**Fixed fixture**

Max length: 1200 mm  
Max weight: 120kg



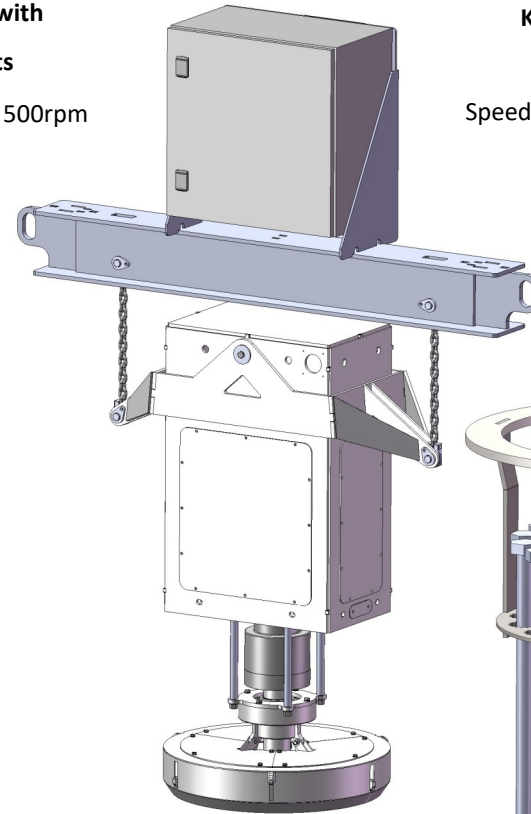
**Fixed basket**

Diameter: 600mm  
Height: 500mm  
Max Weight: 150kg



**K2 Centrifuge with fixed baskets**

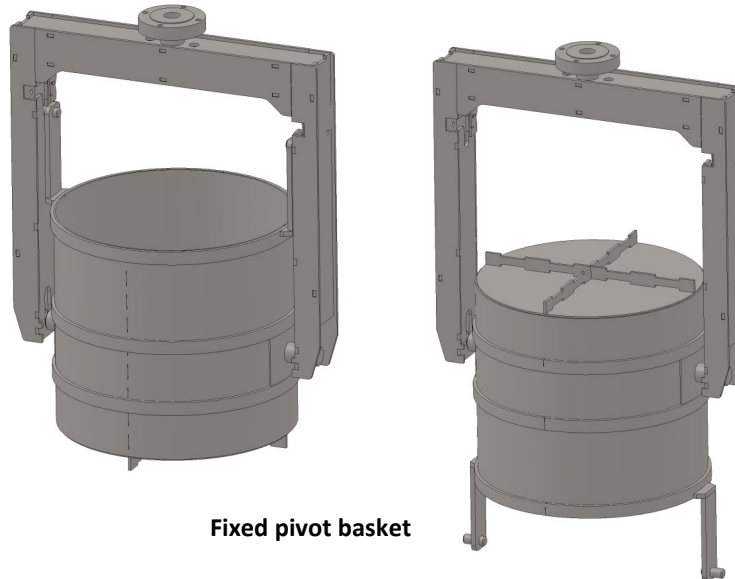
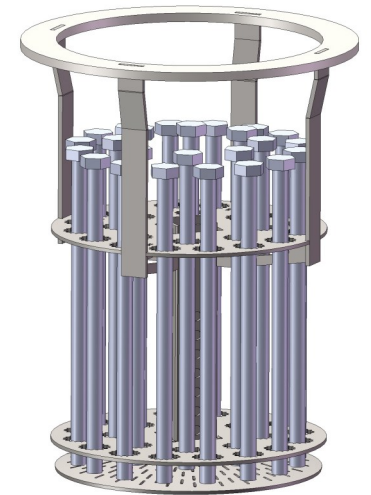
Speed of spinning: 500rpm



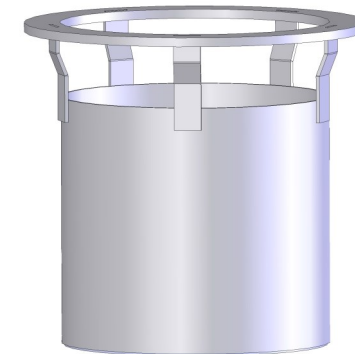
**K2 Centrifuge with basket locking**

Speed of spinning: 500rpm

**Fixture for basket locking**



**Fixed pivot basket**



**Basket for basket locking**

Diameter: 600mm  
Height: 500mm  
Max Weight: 150kg